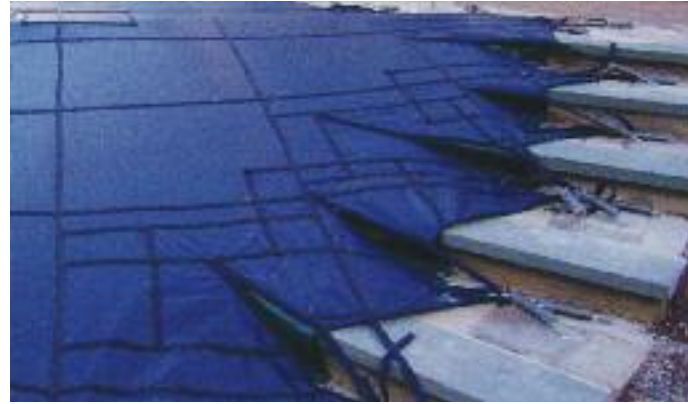


SPECIAL TREATMENTS

From simple to complex, computer design and advanced manufacturing techniques assure you of a properly designed cover that fits perfectly every time. Free form designs, rock formations, waterfalls and raised walls are handled with ease. Our state-of-the-art production facility gives us the ability to make special order covers with ease.

STEPS



RAISED WALLS & ROCK FEATURES



FOUNTAINS, WATERFALLS & BRIDGES



PEGASUS PRODUCTS & THE COVER COMPANY Goes GREEN!

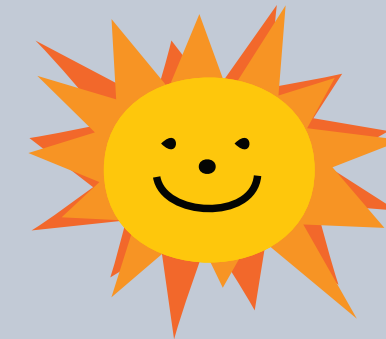


Making a difference in the world.

452 solar panels supply all the power for our New Jersey production plant.



Getting 100% of our energy from the



Liners & Covers designed to fit perfectly everytime, manufactured using **100% SOLAR** power in the USA!



PEGASUS PRODUCTS & THE COVER COMPANY, INC.

19 Readington Road, Branchburg, NJ 08876
908-707-1122 Fax 908-707-1575

www.pegasus-products.com www.coverlon.com



THE COVER COMPANY, INC.



COVERLON

AN AFFORDABLE ELEGANT COVER



THE COVERLON COVER

YOU WILL NEVER HAVE TO WORRY ABOUT LEAVING YOUR HOME AGAIN!

- Double Webbing - The strapping is sewn on both the top and the underside of the cover for extra strength.
- A unique one-piece "easy adjust" heavy-duty stainless steel spring system. (No buckle needed to tighten strap.)
- Non-corrosive brass anchor and strap cap.
- Available in mesh or solid fabrics as listed below.
- All hardware comes with the cover, including an extra long allen key with handle and a stainless steel installation tool.

SUPER COVERLON MESH



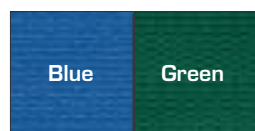
The best mesh fabric available. The tighter weave minimizes the sunlight that passes through the cover, therefore reducing the springtime algae growth.

The ultimate in mesh pool cover material.

US Pat. #6,886,187



SUPER COVERLON SOLID



Our lightweight, super tough solid is lighter weight and stronger than previous solid materials. Plus this rip stop fabric will reduce tearing and fraying in the event something sharp punctures the cover.

The ultimate in solid pool cover material.



THE CONVENTIONAL COVER FABRIC

Made from a high-tech blend of polypropylene, the cover fabric remains pliable and smooth year after year. The Coverlon fabric is 34 x 22 thread count per square inch, while other covers are 34 x 20 thread count. The fabric is impervious to chlorine, mildew resistant, and has an extremely high tensile strength.

MESH FABRIC

Our mesh cover is fabricated with a unique blend of lightweight, supple polypropylene that stays dry and does not crack with age. Rain will not collect on the surface, it just drains through, while leaves and debris dry and blow away. Super convenient, no pumping necessary. Off-season maintenance is virtually eliminated. Available in Green, Blue, and Black.



Green Mesh



Blue Mesh



Designer Black

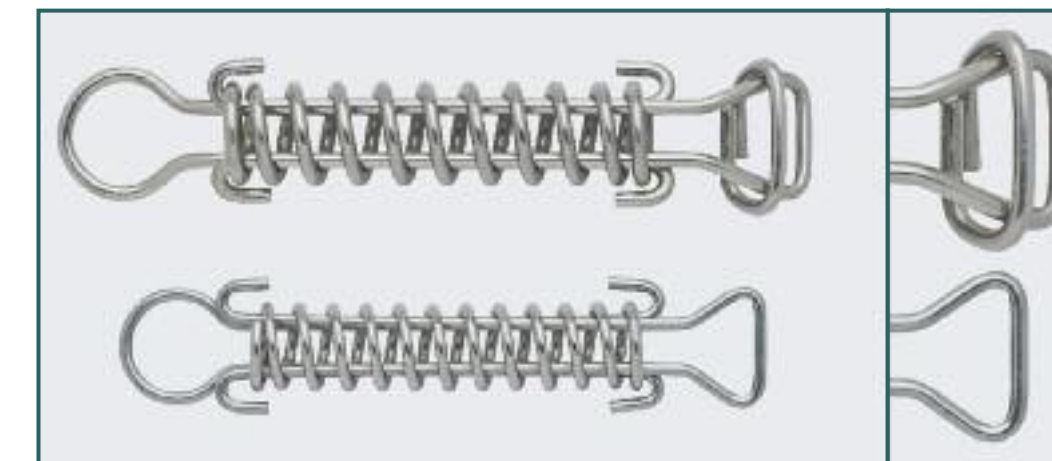
COMMERCIAL POOL COVERS



Our expertise goes well beyond residential pools. The cover's durability and safety features make them well suited for swim clubs, community pools and hotels. Commercial mesh grade fabric is recommended for commercial pools, but is also available for residential applications.

THE HEAVY DUTY SPRING

The cover is securely fastened by our unique extra heavy spring and brass anchor system. The spring is angled down at both the front and the back so there are no gaps between the cover and the pool's edge or deck, this keeps wind and debris out from under the cover. In addition the locking piece on the end of the spring allows you to tighten the strap without a buckle - saving time and hassle.



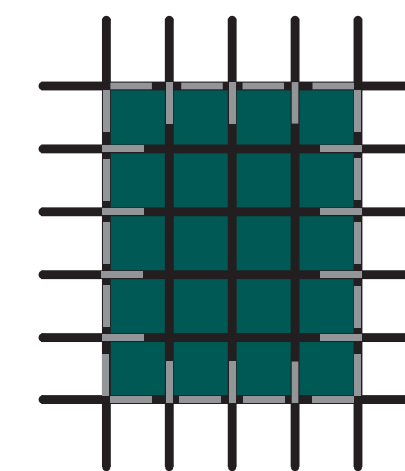
Coverlon Heavy Duty Spring

Competition's Spring

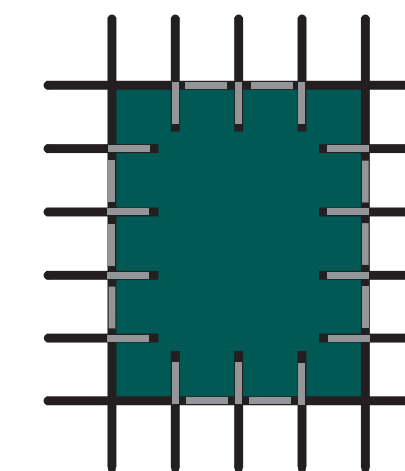
THE HEAVY DUTY WEBBING

The Coverlon cover has strapping on both sides of the cover making the cover super strong and safe. The webbing is specially fabricated with a tensile strength of approximately 4000 pounds per square inch.

COVERLON COVER - BACK



COMPETITION'S COVER - BACK



Wear Bars



Proudly Made in the USA

Coverlon covers meets and exceeds ASTM standard F1346-91-1

EXCLUSIVE SPECIAL FEATURES